

# STRUT CLAMPS



## Metric Clamp With Cushion

2530 - 2540

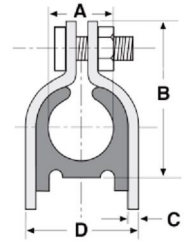
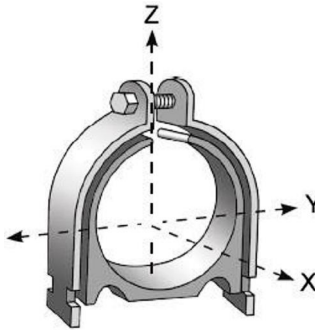


Figure Number	O.D. Size		B	C	D	Standard Package	Wt. Each	
	A						kg	Lbs.
2530	20	(0.79)	45	1.78	34	20	0.09	(0.19)
2531	25	(0.98)	52	1.78	42	10	0.13	(0.29)
2532	32	(1.26)	58	1.78	49	10	0.15	(0.33)
2533	40	(1.57)	70	2.79	56	10	0.22	(0.48)
2534	50	(1.97)	83	2.79	69	10	0.23	(0.50)
2535	63	(2.48)	102	2.79	88	10	0.27	(0.60)
2536	75	(2.95)	115	2.79	101	10	0.28	(0.62)
2537	90	(3.54)	125	2.79	111	10	0.33	(0.72)
2538	110	(4.33)	146	2.79	135	10	0.43	(0.94)
2539	125	(4.92)	166	2.79	156	10	0.48	(1.06)
2540	160	(6.30)	202	2.79	196	10	0.65	(1.43)

Figure Number	O.D. Size		Max. Rec. Load					
			X		Y		Z	
			kN	Lbs.	kN	Lbs.	kN	Lbs.
2530	20	(0.79)	0.33	(75)	0.33	(75)	2.67	(600)
2531	25	(0.98)	0.33	(75)	0.33	(75)	2.67	(600)
2532	32	(1.26)	0.33	(75)	0.33	(75)	2.67	(600)
2533	40	(1.57)	0.33	(75)	0.33	(75)	2.67	(600)
2534	50	(1.97)	0.56	(125)	0.56	(125)	3.56	(800)
2535	63	(2.48)	0.56	(125)	0.56	(125)	3.56	(800)
2536	75	(2.95)	0.56	(125)	0.56	(125)	3.56	(800)
2537	90	(3.54)	0.67	(150)	0.89	(200)	4.45	(1000)
2538	110	(4.33)	0.67	(150)	0.89	(200)	4.45	(1000)
2539	125	(4.92)	0.67	(150)	0.89	(200)	4.45	(1000)
2540	160	(6.30)	0.67	(150)	0.89	(200)	4.45	(1000)



### MATERIAL:

Low carbon steel and thermoplastic elastomer

### TEMPERATURE RANGE:

-65°F to 275°F  
(-54°C to 135°C)

### FINISH:

Western gold

### ORDERING:

Specify figure number and O.D. size.

Available in stainless steel.  
To order, specify 304 or 316 and add suffix SS to figure number.  
Price on request.

Unless otherwise specified, all dimensions on drawings and in charts are in millimeters and dimensions shown in parentheses are in inches.